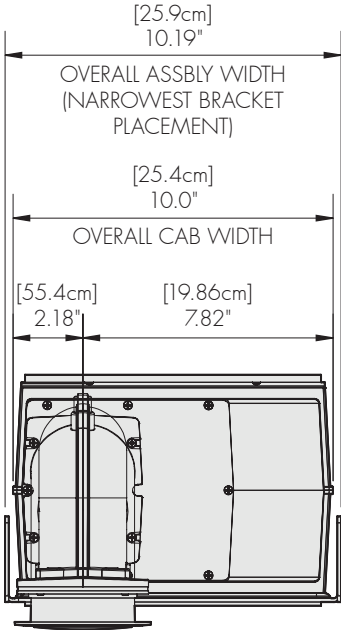
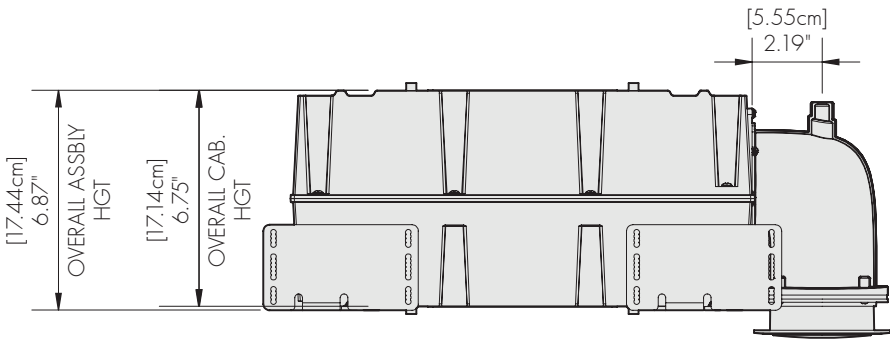


TOP VIEW



FRONT VIEW

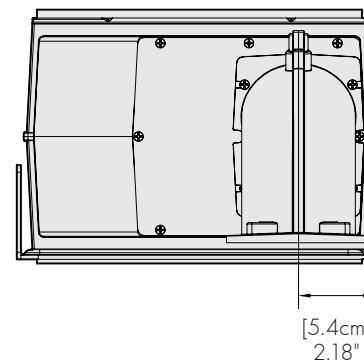
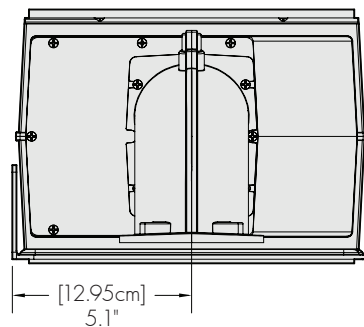
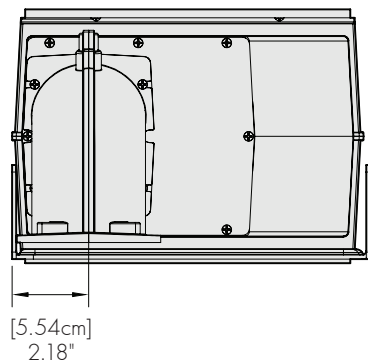


SIDE VIEW

3" ROUND TRIM RING (VISIBLE) AND  
PERF GRILL SHOWN

**OVERALL DIMENSIONS:** (H) 6.87" [17.44cm] x (W) 10.19" [25.9cm] x (D) 19.51" [49.56cm]  
**WEIGHT:** 16.5lbs (7.5kg) each

Variable Aperture In-ceiling Speaker  
(center of port tube to cabinet edge)



**OVERALL DIMENSIONS:** (H) 6.87" [17.44cm] x (W) 10.19" [25.9cm] x (D) 19.51" [49.56cm]

**WEIGHT:** 16.5lbs (7.5kg) each